

Juxtaposition inherent in
al design (soft meets
ets utility) and pulled
r of our lives' stages,
acticality to wisdom,
OX COLLECTION puts
l function on display
alk the line between
weathered texture,
ruler-straight lines.
Juxtaposition inherent
rial design (soft meets
ets utility) and pulled
r of our lives' stages,
acticality to wisdom,
OX COLLECTION puts
l function on display
alk the line between
weathered texture,
ruler-straight lines.
Juxtaposition inherent
rial design (soft meets
ets utility) and pulled
r of our lives' stages,
acticality to wisdom,
OX COLLECTION puts
l function on display
alk the line between
weathered texture,
ruler-straight lines.
Juxtaposition inherent
rial design (soft meets
ets utility) and pulled
r of our lives' stages,
acticality to wisdom,
OX COLLECTION puts
l function on display
alk the line between
weathered texture,
ruler-straight lines.

LEADING LADY

CENTER STAGE

SHADOWBOX COLLECTION

VISIT OUR WEBSITE



SHADOWBOX COLLECTION

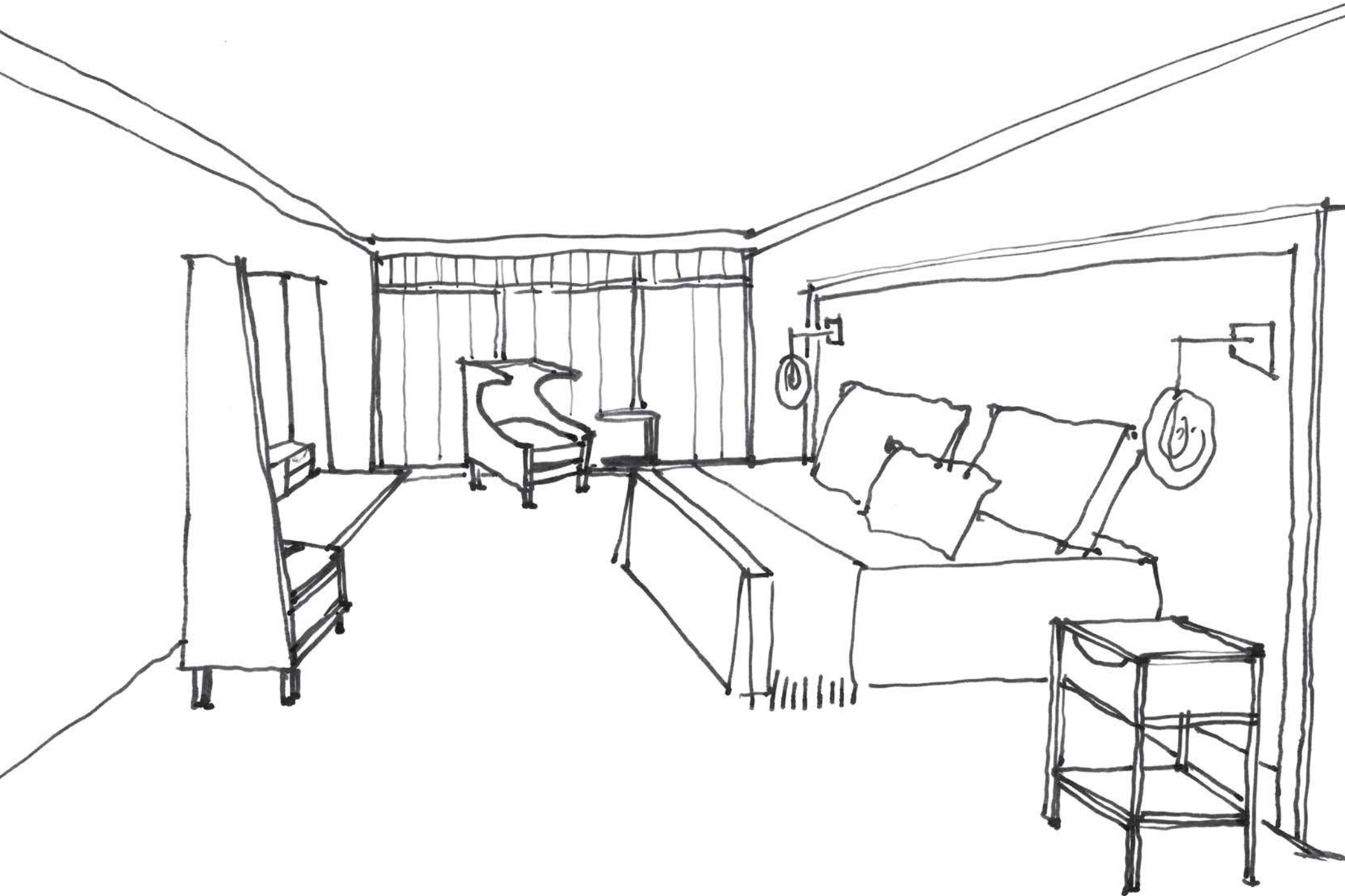
LIBBY SIMS PATRICK *for* JORDAN YOUNG INTERNATIONAL

{ Collection Concept }

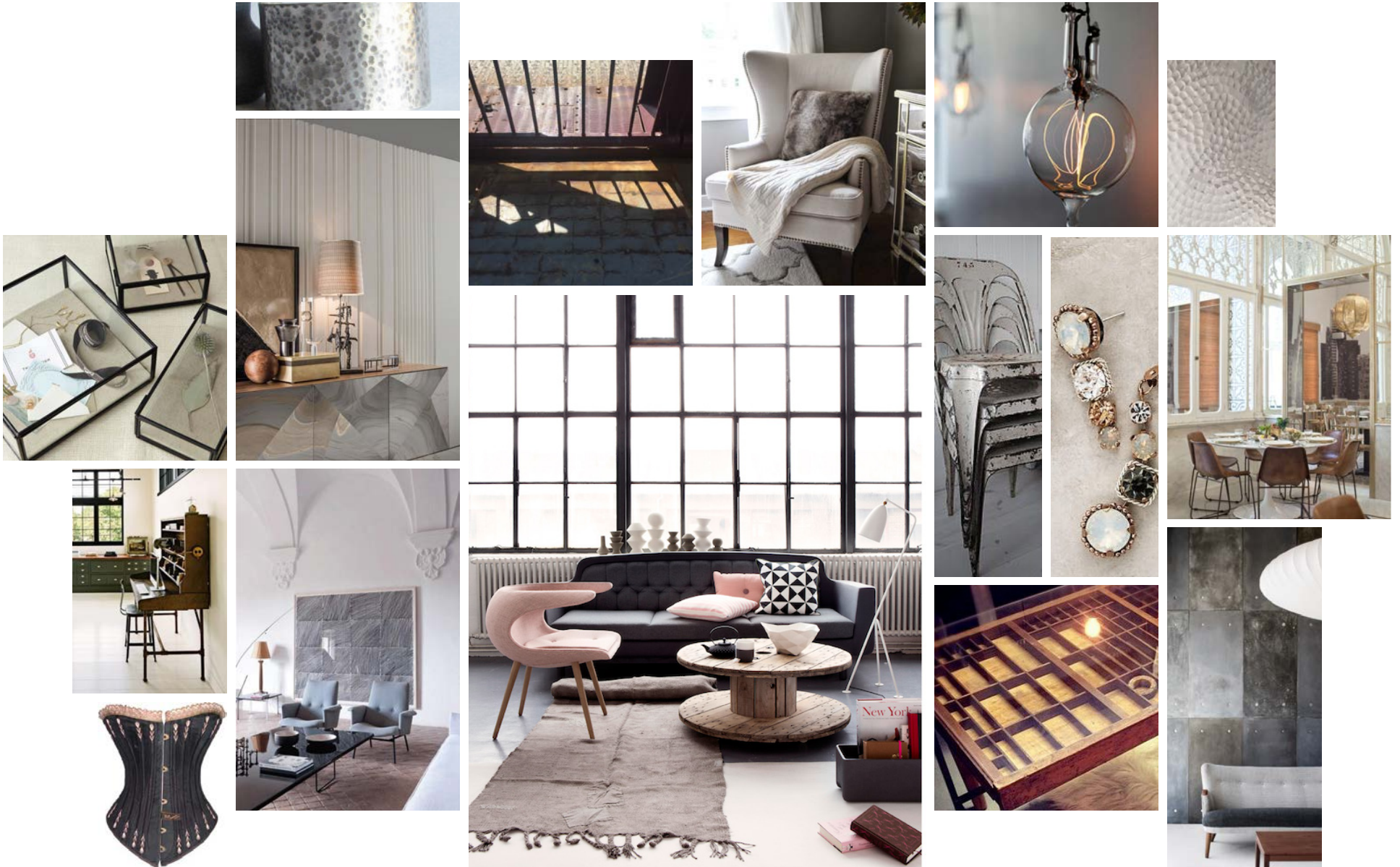
FEMININE **INDUSTRIAL**

Inspired by the juxtaposition inherent in feminine industrial design (soft meets hard, whimsy meets utility) and pulled through the filter of our lives' stages, from play to practicality to wisdom, THE SHADOWBOX COLLECTION puts both beauty and function on display in pieces that walk the line between high finish and weathered texture, soft curves and ruler-straight lines.

{ Collection Concept }



{ Inspiration }



{ Inspiration }

“I used the metaphor of life’s phases to inspire the design of the furniture. We all perform our lives in three stages: As children, we bask in the spotlight, loving to play, laugh and to be surprised. As we mature, we step up to the footlights to become more practical, responsible and structured. As we grow older, we take our bow (hopefully) full of wisdom and good character, teaching and sharing what we have learned. I’ve infused these three life parts into the collection. Childlike whimsy through the pieces’ shapes, forms, pops of color and surprise compartments. Maturity through a framework of organized lines, classic proportions, beautiful joinery and distinctive details. Finally, depth of character through finishes with texture and patina.” **LIBBY SIMS PATRICK**

FEMININE

White Headboard frame—lacquer or pearlized

Metallic Bedside Table structure—light gold, silver

Glass Bedside Table top—smooth

Leather Bedside Table box drawer—charcoal to black

Velvet Wingback—darker industrial color (light metal feet)

Glass Table with metallic structure—light gold, silver

Wood Secretary with industrial leather and metallic detailing

Wool Bench

INDUSTRIAL

Dark wood Headboard frame—lacquer or stain

Blackened steel Bedside Table structure

Glass Bedside Table top—antiqued mirror

Leather Bedside Table box drawer—saddle to light

Velvet Wingback—light, feminine color (dark metal feet)

Wood Occasional Table with blackened steel structure

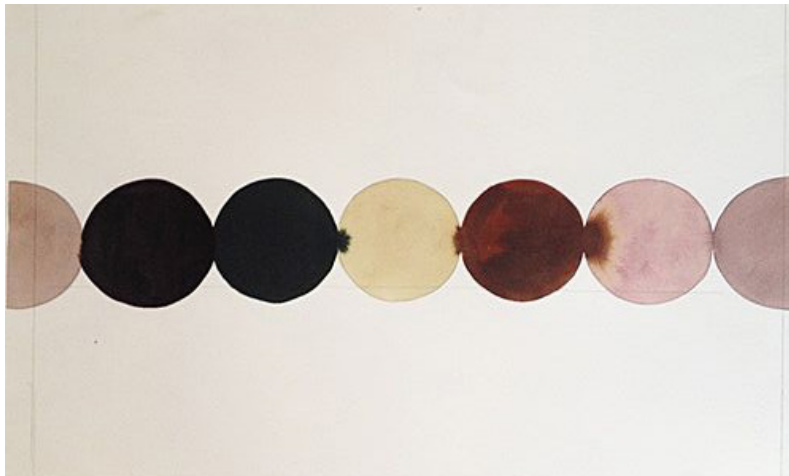
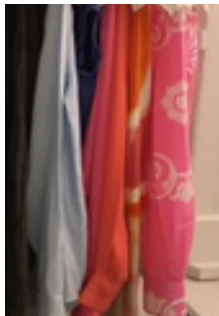
Wood Secretary with colored leather and dark detailing

Leather Pouf

{ Palette_Neutrals }

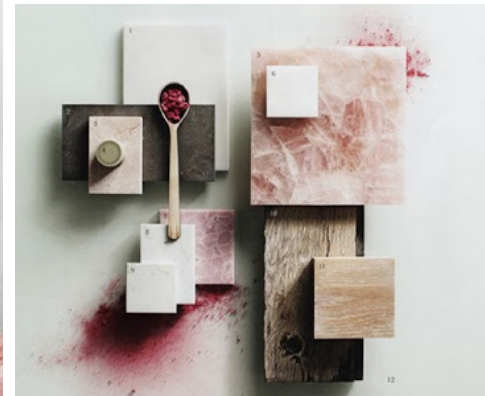
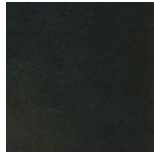


{ Palette_Colors }



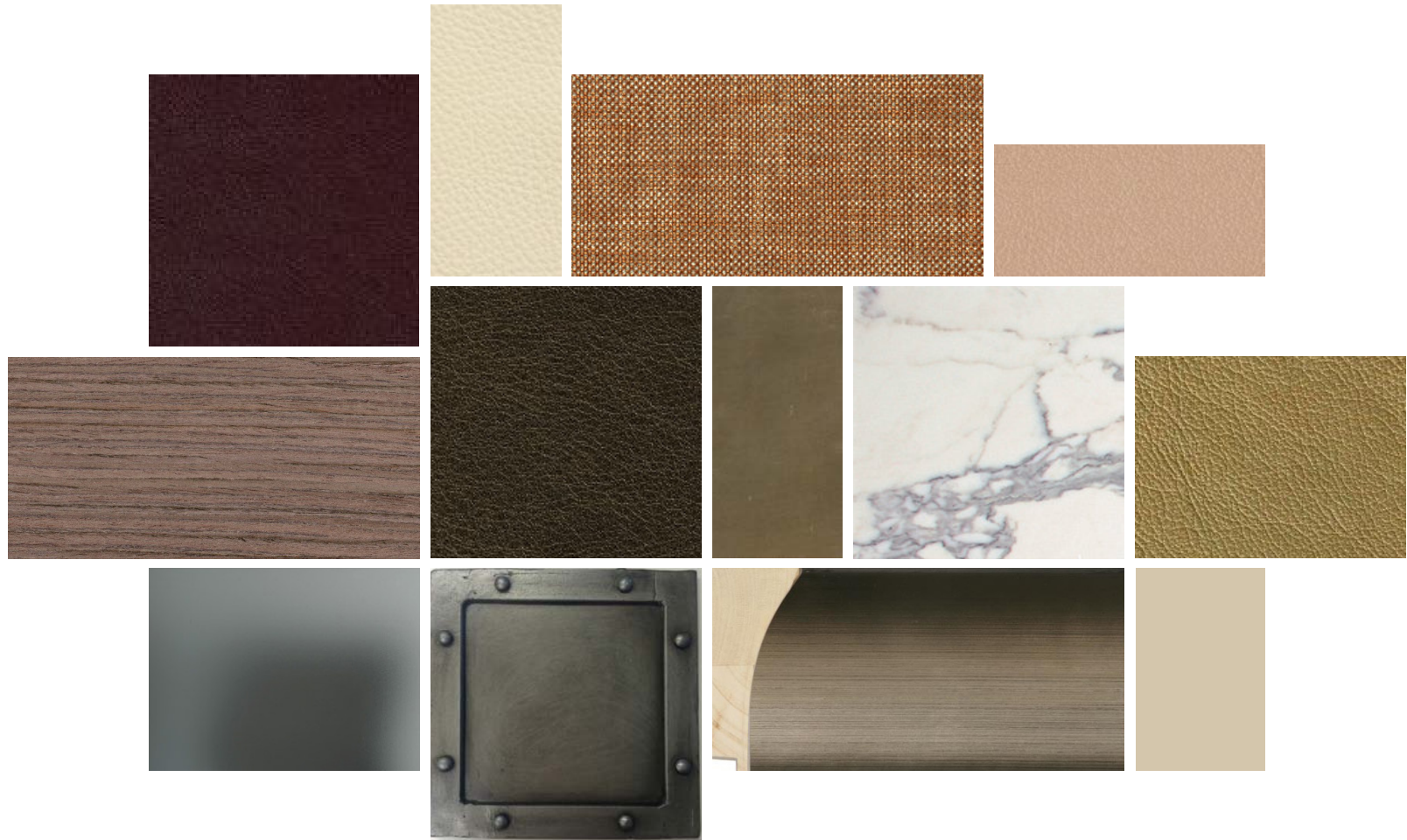
Sims Patrick Studio

{ FF&A_Concept }



Sims Patrick Studio

{ FF&A_Final }



MARQUEE { Headboard }

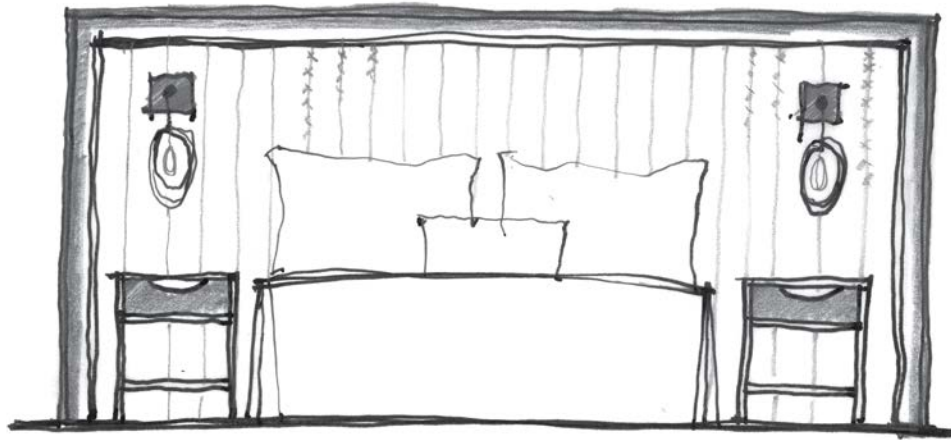
Both frame and backdrop to the collection.
A centerpiece display in burnished metal
and stitched leather.

72"H x 106"W x 7"D

Design features:

- Backed Tiger Leather headboard
- Leather stitched together in 6" strips
- LED strip lighting integrated into cove
- Bose® sound system

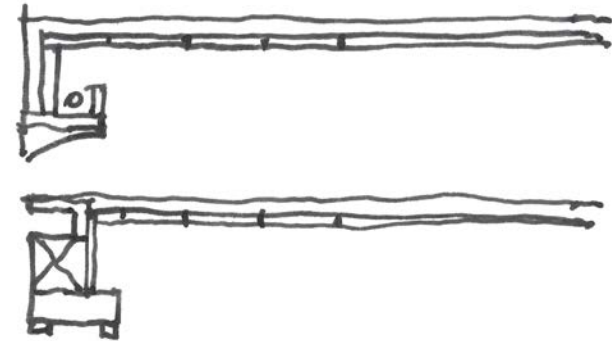
{ Headboard Design }



HEADBOARD ELEVATION WITH TABLES



SECTION OF FRAME DETAIL



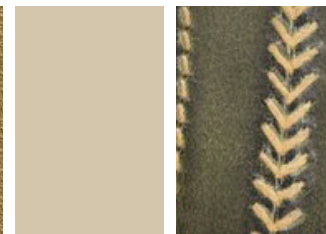
HEADBOARD METALLIC SILVER FRAME



HEADBOARD LEATHER



BASEBALL STITCHING



ACT 1 { Bedside Table }

Classically proportioned supporting characters.
Wit meets function with colorful contrast
stitching, lux leather and a view-through top
that makes the everyday art.

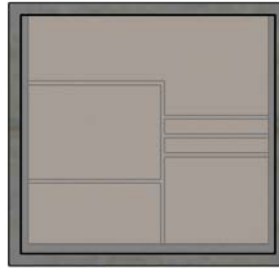
28"H x 18"W x 17"D

Design features:

- Smoky gray glass transparent top
- Smoky gray back-painted glass lower shelf
- Contrasting stitch detail inside divided drawer

{ Bedside Table Design }

PLAN



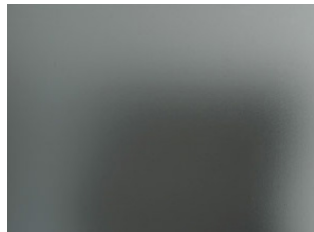
ELEVATION



METAL FINISH



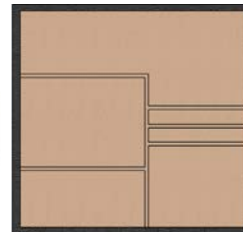
SMOKY GRAY GLASS



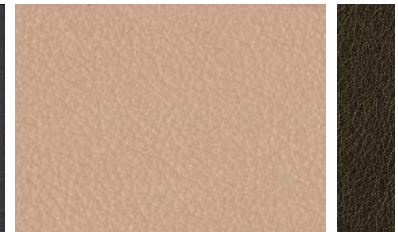
BOX CONCEPT



DIVIDED DRAWER



LEATHER



CENTER STAGE { Secretary }

A hardworking star of storage and industry. Featuring soft leather, weathered wood and deep, catalyzed color.

72"H x 49.25"W x 20"D

Design features:

- Leather interior
- Leather inset at desk surface
- Metal base and legs
- Drawers with integrated pulls
- Small compartments
- Flat screen TV mounted to interior
- Pull-out desk surface

{ Secretary Design }



PLAN



ELEVATION



WOOD VENEER



LEATHER INSET



METAL LEGS



LACQUERED DRAWER FRONTS



LEADING LADY { Wingback Chair }

A whimsical wingback with lots of presence.
A responsibly stately chair with playful intentions.

48"H x 30"W x 33.5"D

22.5" Seat depth

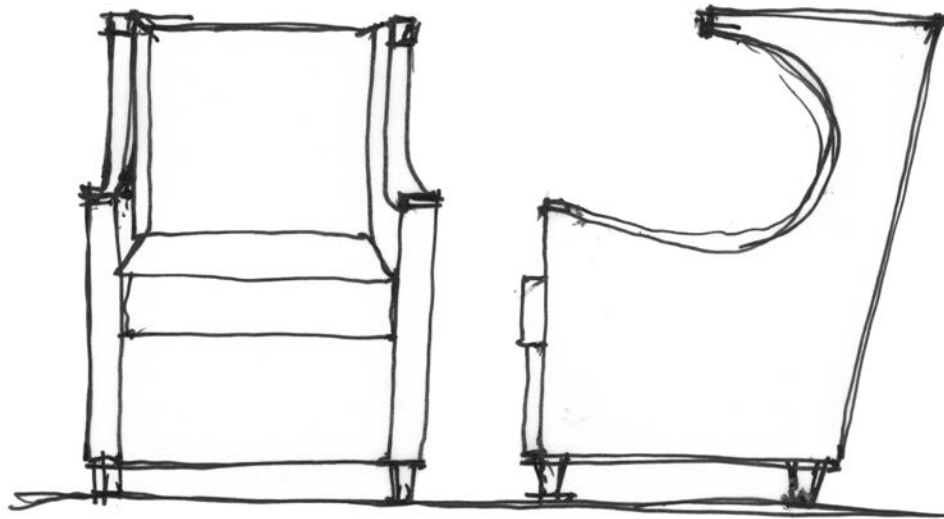
17.5" Seat height

25" Arm height

Design features:

- Comfortable arm height
- 1/2" foam wrap (fiber polyfill)
- 1/4" goosedown topper
(full zipper plus 4" on back)
- Feather fill will be at crown height of 17.5"
- Connection hooks on back of cushion
- Complimentary accent pillow

{ Wingback Design }



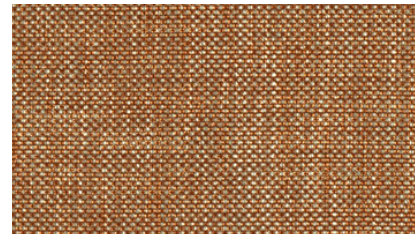
CHAIR CONCEPT



LEATHER



ACCENT PILLOW



WOOD FEET



SPOTLIGHT { Occasional Table }

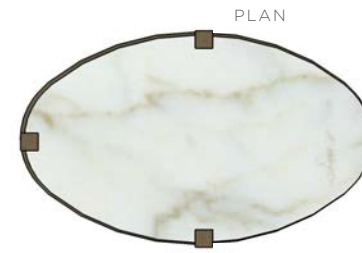
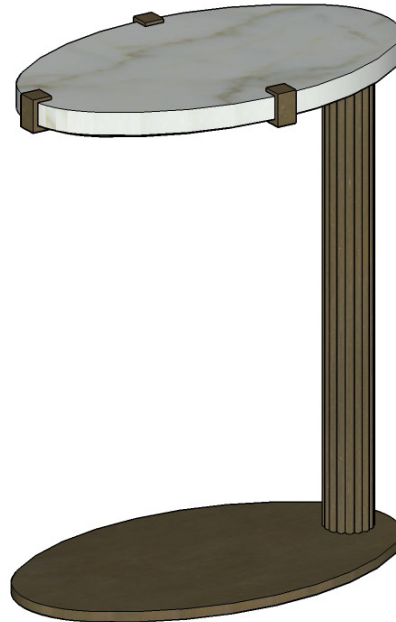
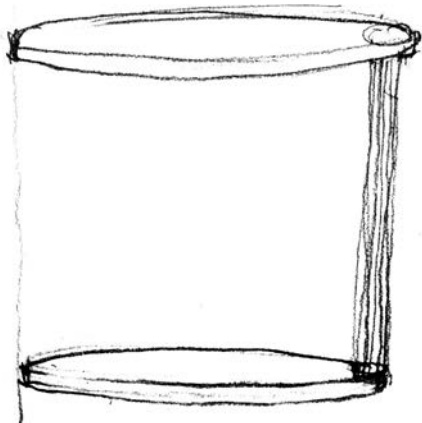
A sparkling complement in moonlight marble and burnished gold. Cantilevered, sophisticated, and full of fun.

27"H x 17.75"W Oval x 11.75"D

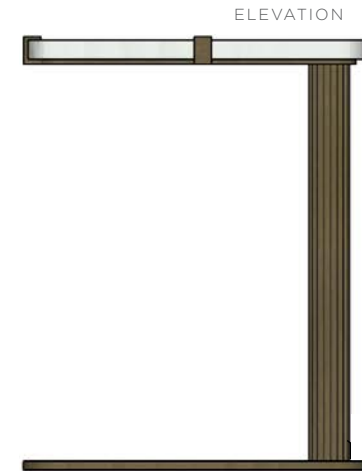
Design features:

- Refined clamp details at marble
- Weighted metal base
- Tough Skin finish applied to marble
- Welded joints
- Laptop height

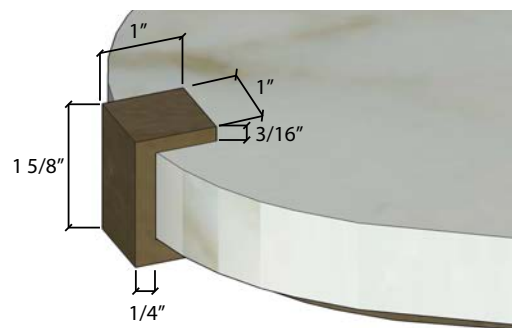
{ Occasional Table Design }



PLAN



ELEVATION



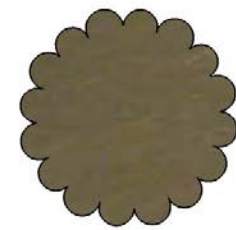
MOONLIGHT CALACATTA



BURNISHED GOLD



LEG SECTION





Sims Patrick Studio

Libby Patrick IIDA, LEED-AP
CEO

“Design should inspire all the senses!”

The core of Libby Patrick’s design philosophy is making three-dimensional spaces come to life. Inspired by the things we see every day, she transforms places into memories. Libby grew up in the countryside of North Alabama immersed in Southern hospitality. She loved drawing and painting everything around her and at a young age made the decision to combine her love of art with architecture.

After earning her Bachelor of Interior Design degree from the School of Architecture at Auburn University, she honed her skills as a hospitality designer at two major architecture firms. Once she started a family, Libby founded Sims Patrick Studio in the basement of her home. Since 1999, SPS has emerged as a leading boutique design studio based in Atlanta, Georgia.

She currently leads a large team of design professionals that focus on interior architecture and design for a diverse group of project types. SPS uses design and storytelling to enable their clients to realize their visions and dreams, bringing a luxurious hospitality experience to every project. The studio has a portfolio of award winning projects that includes hotels, shopping centers, luxury residential, corporate, historic and community projects in the US and internationally. Libby is frequently invited to be a featured panelist and speaker at national events, schools and conferences for groups such as HD Expo, the Hunter Hotel Conference, NEWH, ICSC, IIDA, ASID, NEOCON and the Ronald McDonald Charities. Sims Patrick Studio’s work has been featured in many publications including Hospitality Design Magazine, Architectural Record, Trends, Design Et-Al, Better Homes and Gardens, Hotel Design Magazine, Hotel News Now, RE Business, Business Insider, and Hotel Business Design Weekly.

Because her brother died of ALS, Libby is on the executive board of the MDA’s Night of Hope to find a cure for this horrific disease. She enjoys participating in a variety of sports including kickboxing, swimming and golf.

Sims Patrick Studio provides a rich and delightful interior design process out of our Atlanta studio, integrating our expertise in hospitality, retail, restaurant, corporate and high-end residential projects. Our extensive talents and capabilities allow us to listen, strategize, design and express concepts that lead to distinguished interiors, renovations and branded environments. Reach us at simspatrickstudio.com or 404 261 6043.

SHAPING PLACES INTO MEMORIES

inherent in
soft meets
and pulled
es' stages,
o wisdom,
TION puts
on display
e between
d texture,
ght lines.
n inherent
soft meets
and pulled
es' stages,
o wisdom,
TION puts
on display
e between
d texture,
ght lines.
n inherent
soft meets
and pulled
es' stages,
o wisdom,
TION puts
on display
e between
d texture,
ght lines.
n inherent
soft meets
and pulled
es' stages,
o wisdom,
TION puts
on display
e between
d texture,
ght lines.

MARQUEE

ACT 1

SPOTLIGHT

Sims Patrick Studio

[VISIT OUR WEBSITE](#)

