

Sims Patrick Studio

SHAPING PLACES INTO MEMORIES

OUR GOAL FOR EVERY EXPERIENCE WE CREATE:

MAKE IT MEMORABLE

MAKE IT CAPTIVATING

MAKE IT DELIGHTFUL

Core Leadership

90+ Tripod leadership
combined years of
industry experience



JENNY RUTLEDGE

Principal, VP of Design + Construction

Leading 3D design, construction
documentation and architect collaboration

LIBBY PATRICK

CEO

Conceptual and narrative guru: passion
for the personal side of interior design

MELISSA WYLIE

Principal, VP of Design + Operations

Oversees technical specifications for
furniture, furnishings and artwork

Culture Team

We are world-traveling, culturally curious, diversely talented designers, planners and project managers with a deep love of the arts—**gathering inspiration everywhere we go.**



Culture

Woman-owned and led global interior design studio based in Atlanta, Georgia

Founded in **1999**

25 active projects average

17 employees

85% Hotels

10% Multifamily

5% Other (restaurants, corporate, community)

60+ hotel projects in last 7 years

HOSPITALITY

BELLEVIEW INN

BELLEAIR, FL





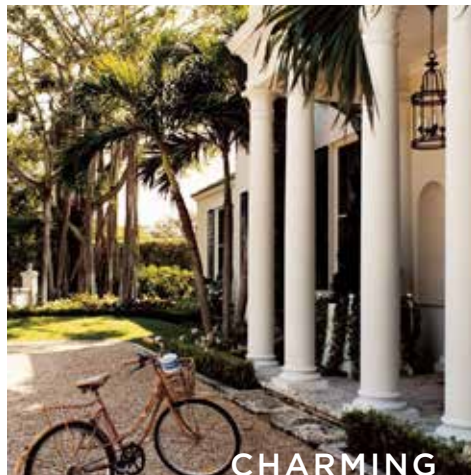
CLASSIC



GRAND



ECLECTIC



CHARMING



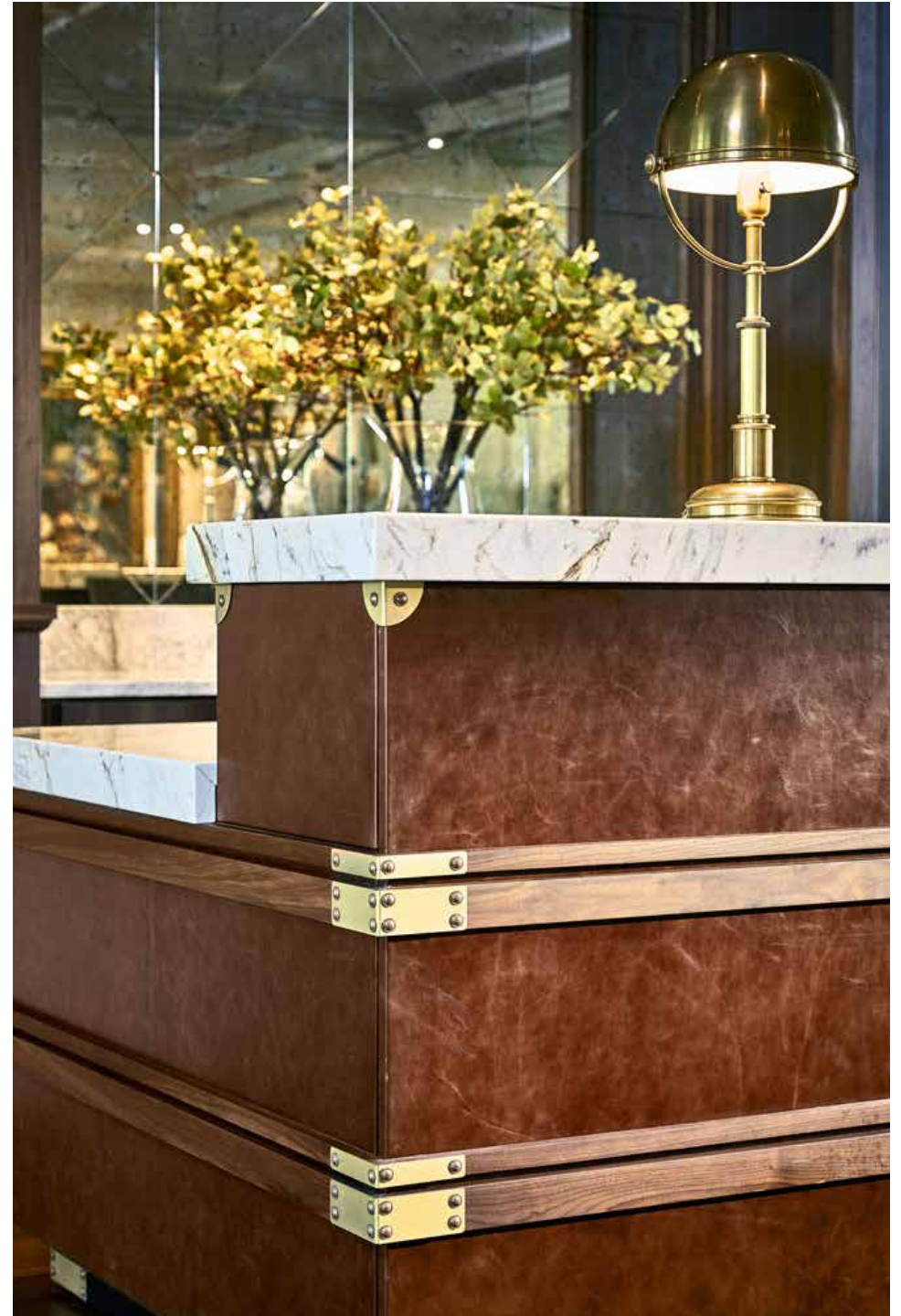
HISTORIC

THE BELLEVIEW INN

Formerly known as the Belleview Biltmore Resort, The Belleview Inn is located in the coastal town of Belleair, Florida. The original Queen Anne style property was built in 1897 by Henry Plant and was a luxury retreat for many famous people, dignitaries, and leaders. The building is noted for its signature architectural features - its vintage green roof, white wood sided exterior, hand-carved woodwork and Tiffany glass on the interior - all of which have been restored or repurposed for the renovation. The new 35-room Belleview Inn, which is also on the register of Historic Hotels of America, celebrates Gilded Age glamour with a touch of modern Southern charm. The revitalized portion of the resort retains the classic symmetrical layout of the grand mansion as well as the sweeping porch, the grand staircase, a reading room, library pub, restaurant, and a vintage-style ice cream parlor. Guestrooms and suites are spread out between the 2nd through 4th floors, and guests are greeted each morning with a basket of freshly baked pastries and the morning paper. The rich history, legacy, and hospitality of the 120+ year property have been woven throughout the hotel in both a literal and an abstract form, bringing this exquisite hotel back to its former glory.



















CROWNE PLAZA

AUGUSTA, GA



COMFORTABLE



NATURAL



WHIMSICAL



TRADITIONAL

CROWNE PLAZA

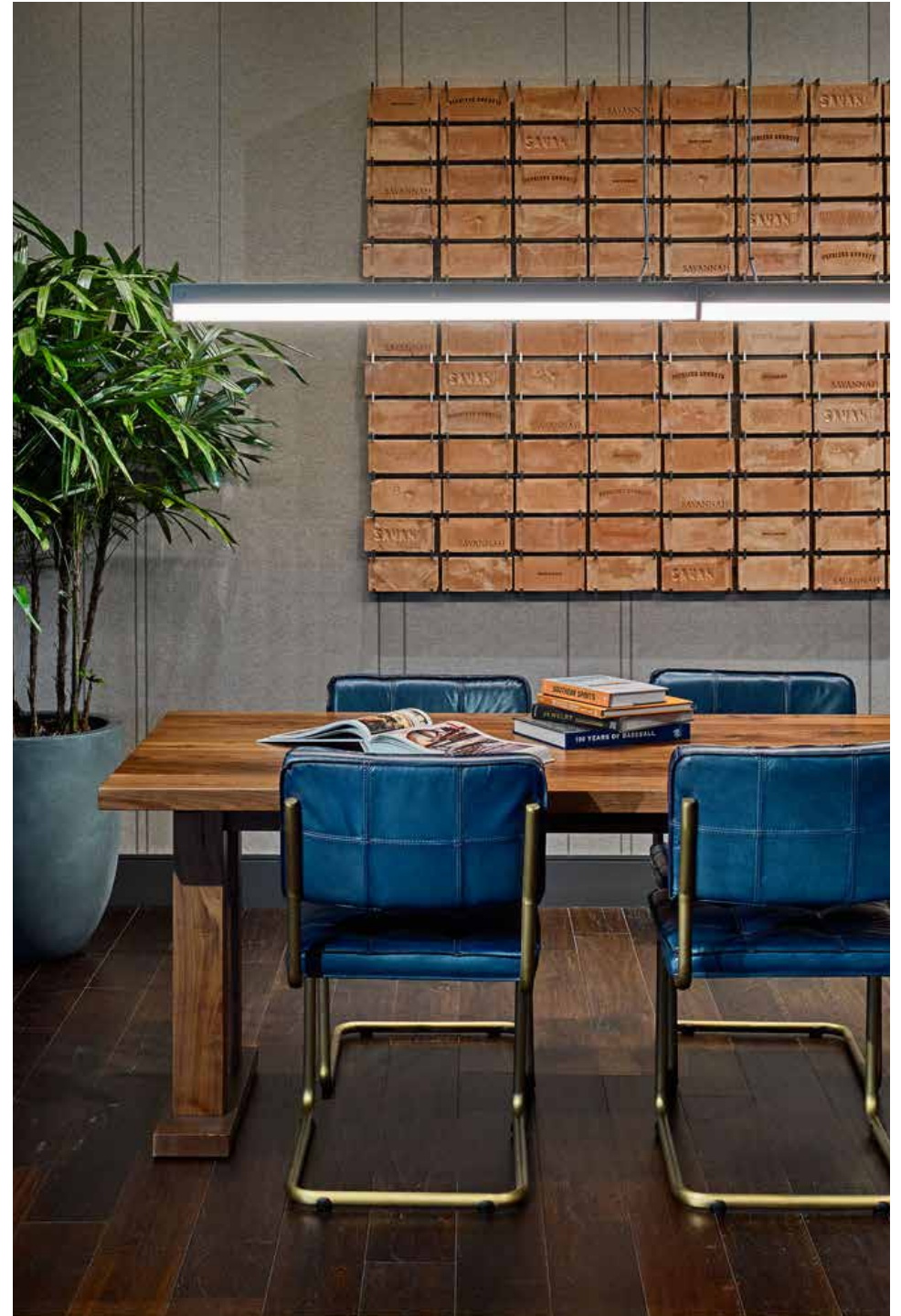
The new Crowne Plaza Hotel is located along North Augusta's riverfront as part of the long awaited Project Jackson, named for the Augusta businessman who originally designed the town at the turn of the 20th century. The hotel is a central meeting spot for locals and visitors alike for community events, baseball, and to soak up southern hospitality. The overall exterior architecture of the hotel is inspired by the famous Hampton Terrace Hotel completed in 1903. Before it tragically burned to the ground in 1916, the grand hotel was a resort for the rich and famous and had gained the reputation of being one of the most beautiful and handsomely appointed hotels in the South. Industrialists John D. Rockefeller and Harvey Firestone along with department store mogul Marshall Field and President William Taft came annually to "winter" in the South to enjoy golf, tennis, horseback riding, hunting, fishing, and simply the best that Southern Hospitality had to offer.

Fast forward 100 years later, our fresh interior design direction gives a nod to the glamour of the Golden Age of the Hampton Terrace and its status as a respite for the leisure sportsman, while embracing the modern South. Pulling inspiration from the nearby Sibley Mill, a confederate gunpowder plant that was modeled after the British Parliament, our interiors blend the sophistication of the southern heritage of leisure sporting with the modern edge of the industrial aesthetic. Our design provides a warm and inviting backdrop using familiar materials and finishes with contrast, textures, and good proportions used in simpler, more modern ways. We embrace the contrasts between old and new, formal and informal, to create a sense of place that is welcoming, refined, relaxed, whimsical, and inspiring. The hotel's restaurant may feature "up and coming" southern chefs but it will always have fried chicken and shrimp and grits.





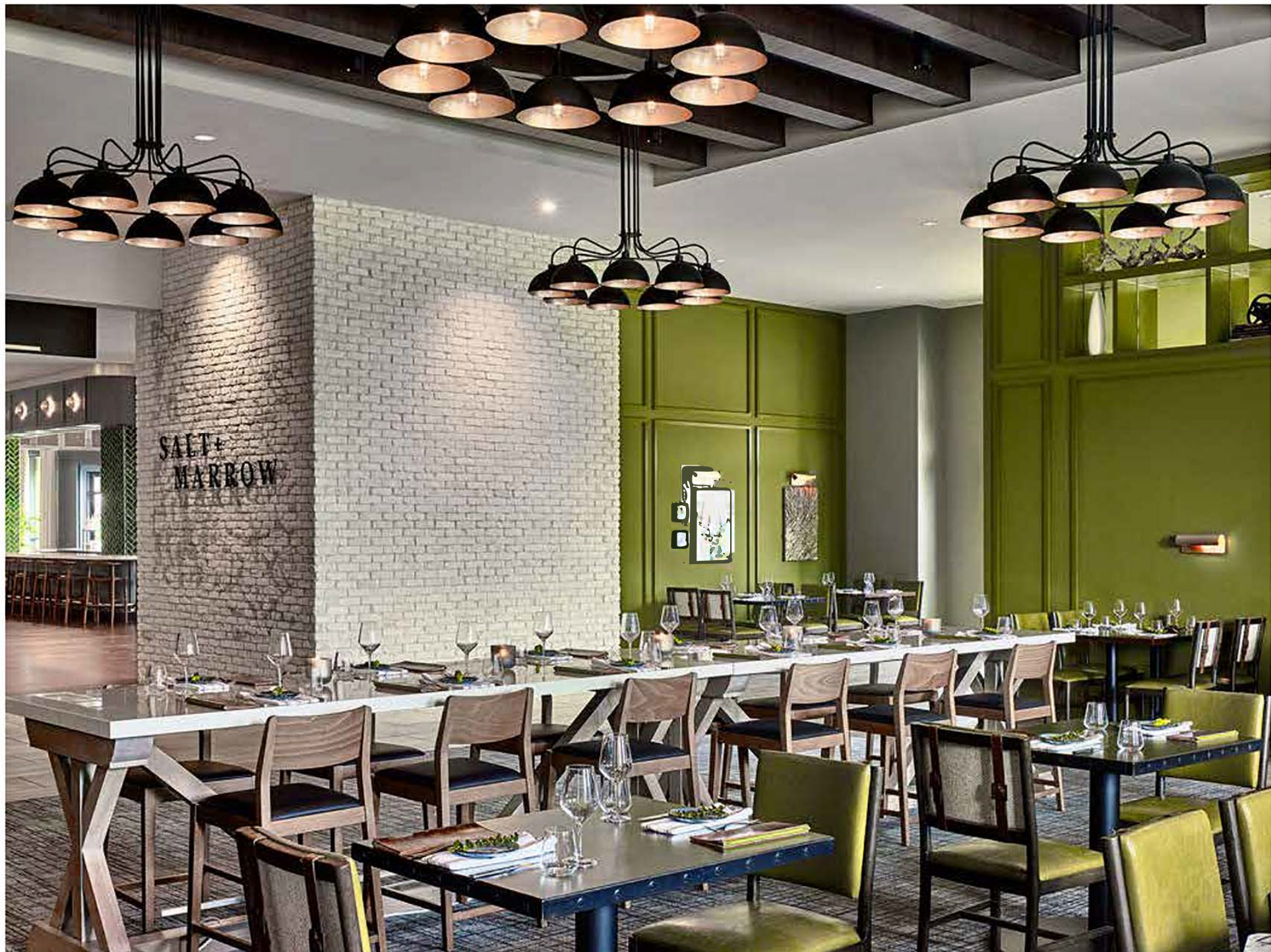
















JACKSON'S BLUFF





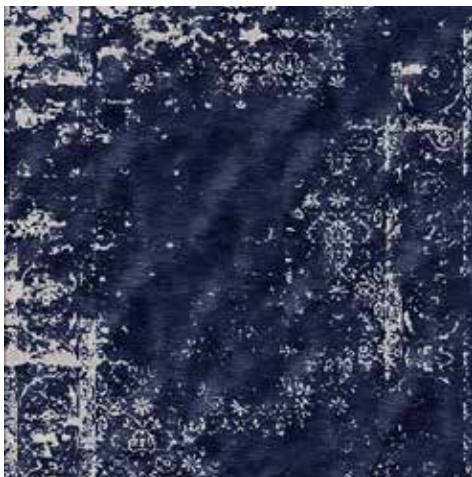
THE GRAND HOTEL BY AUTOGRAPH

POINT CLEAR, ALABAMA



THE GRAND HOTEL BY AUTOGRAPH

With the goal of making each guest feel like a pampered celebrity, the main landmark building of the Grand Hotel in Point Clear Alabama interior decor is updated to align the finest of Southern hospitality service and tradition with a new design that nods to the past yet provides a fresh new decor and the latest food concepts and understated luxurious amenities. The interior design is an eclectic mix of Old World charm and modern southern hospitality. With the past and present generations of families in mind, the new facelift keeps the old characteristics of the building in tact while providing a new floor plan that flows just right and puts emphasis on telling the stories that have made the property such a legacy. Through the use of signature focal features and artwork, the property is full of delightful surprises. Whether the guest is attending a conference, a wedding, to play golf, a family vacation or is a local resident, the new design celebrates the magic of this understated yet elegant place located overlooking the Mobile Bay amongst the majestic live Oak trees and beautiful landscaping. The new design takes cues from the history and character of existing features, finishes, textures and patterns of the building yet adds a new layer of 21st Century pizzazz.















HOT DRINKS

GRAND CUP OF COFFEE	\$5.15
Hot Tea	\$3.00
Hot Chocolate	\$3.00
Espresso	\$3.15
Cappuccino	\$4.25
Latte	\$4.25
Espresso with almond milk	\$4.25
Latte	\$4.25
Espresso with almond milk	\$4.25
Espresso with almond milk	\$4.25

COLD DRINKS

Ice Tea	\$3.00
Soft Drink	\$3.00
Smoothie	\$4.00
Espresso	\$3.15
Cappuccino	\$4.25
Latte	\$4.25
Espresso with almond milk	\$4.25
Latte	\$4.25
Espresso with almond milk	\$4.25
Espresso with almond milk	\$4.25

COFFEE DRINKS

Espresso	\$3.15
Cappuccino	\$4.25
Latte	\$4.25
Espresso with almond milk	\$4.25
Latte	\$4.25
Espresso with almond milk	\$4.25
Espresso with almond milk	\$4.25
Espresso with almond milk	\$4.25
Espresso with almond milk	\$4.25
Espresso with almond milk	\$4.25

TEA DRINKS

Espresso	\$3.15
Cappuccino	\$4.25
Latte	\$4.25
Espresso with almond milk	\$4.25
Latte	\$4.25
Espresso with almond milk	\$4.25
Espresso with almond milk	\$4.25
Espresso with almond milk	\$4.25
Espresso with almond milk	\$4.25
Espresso with almond milk	\$4.25

BRAND NEW

GLASS-BLANK

HOT DRINKS

Espresso	\$3.15
Cappuccino	\$4.25
Latte	\$4.25
Espresso with almond milk	\$4.25
Latte	\$4.25
Espresso with almond milk	\$4.25
Espresso with almond milk	\$4.25
Espresso with almond milk	\$4.25
Espresso with almond milk	\$4.25
Espresso with almond milk	\$4.25



THE GRAND NATIONAL SPA

OPELIKA, AL



COMFORTABLE



COZY



NATURAL



INVITING



RELAXED

THE GRAND NATIONAL SPA

The Grand National is a three-level spa and fitness center in Opelika, AL providing guests and neighboring community a first-class wellness facility. This retreat borrows elements from the natural surroundings of the Alabama landscape and combines them with modern luxury. Guests enter through the lobby and are greeted at a welcoming reception desk made from local Walnut tree. The lobby features a focal fireplace and tall windows surrounded by comfortable seating, hanging plants, swings, and smartly displayed products. The path to the locker rooms, lounge areas and showers has been well-planned for ease of circulation and privacy. Each treatment room invites individual guests to indulge their senses and relax their body and mind in a naturally calm setting. The quiet room is filled with candlelight, warm neutral colors, an inviting sauna and whirlpool experience and a twinkling southern sky ceiling. The hallway leading to the treatment rooms has dramatic vertical accent lights highlighting a textural stone wall and is punctuated with faux foliage giving the illusion of an outdoor space. The second floor has a salon with pedicure and manicure stations, hair styling services, a make-up artist station, and an array of beauty products on display. Upstairs, the fitness area provides the latest in equipment and a hydration bar. The light filled, open truss ceiling allows natural light in and the central multi-use exercise and movement room invites guests to join a yoga, dance, or body sculpting class. The facility was designed to provide a refresh to anyone's day; whether enjoying the spa, taking advantage of the salon or putting in some time at the gym, a visit to the Grand National Spa is sure to have guests leave with a reinvigorated pep in their step.

















ELBERT HOTEL

ELBERTON, GEORGIA



ELBERT HOTEL

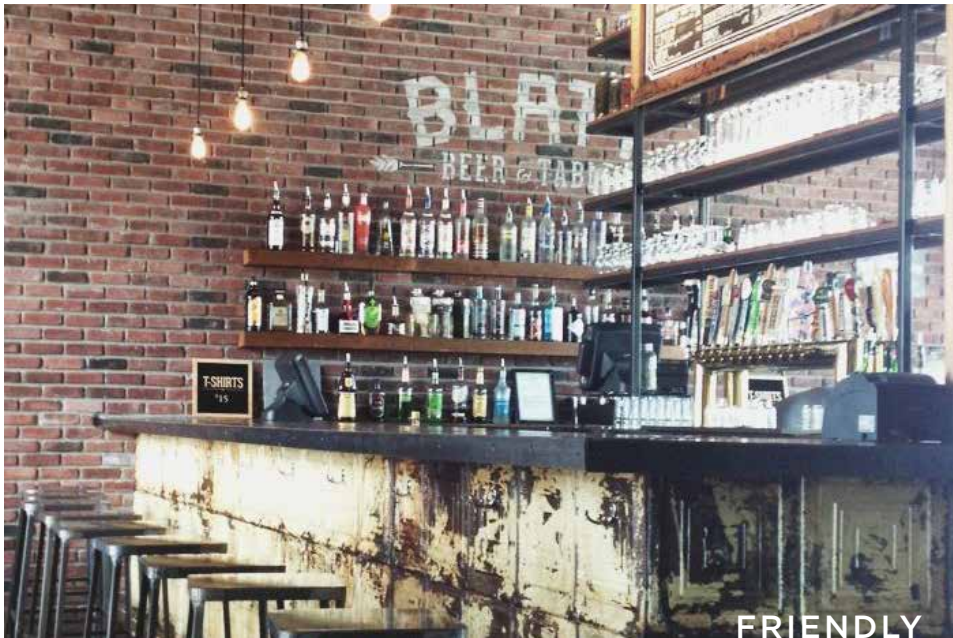
Located in the heart of downtown Elbert Georgia, this 1925 Tudor Revival style building was purchased by the City of Elberton with hopes of developing a viable hotel and conference center to benefit the City. The property includes 27 newly created hotel rooms as well as a ground level restaurant space with banquet hall. The original historic details of this hotel have been preserved including the original two-toned terrazzo floors and large stone fireplace. Located on the public square, you can walk to shops and restaurants and explore historic sites and monuments. With lovely views from almost every window, the property combines the original character of the historic property with the technology and convention of today. It is a luxurious getaway for meetings, events, retreats and family gatherings.



HISTORIC



LOCAL COMMUNITY



FRIENDLY



POLISHED



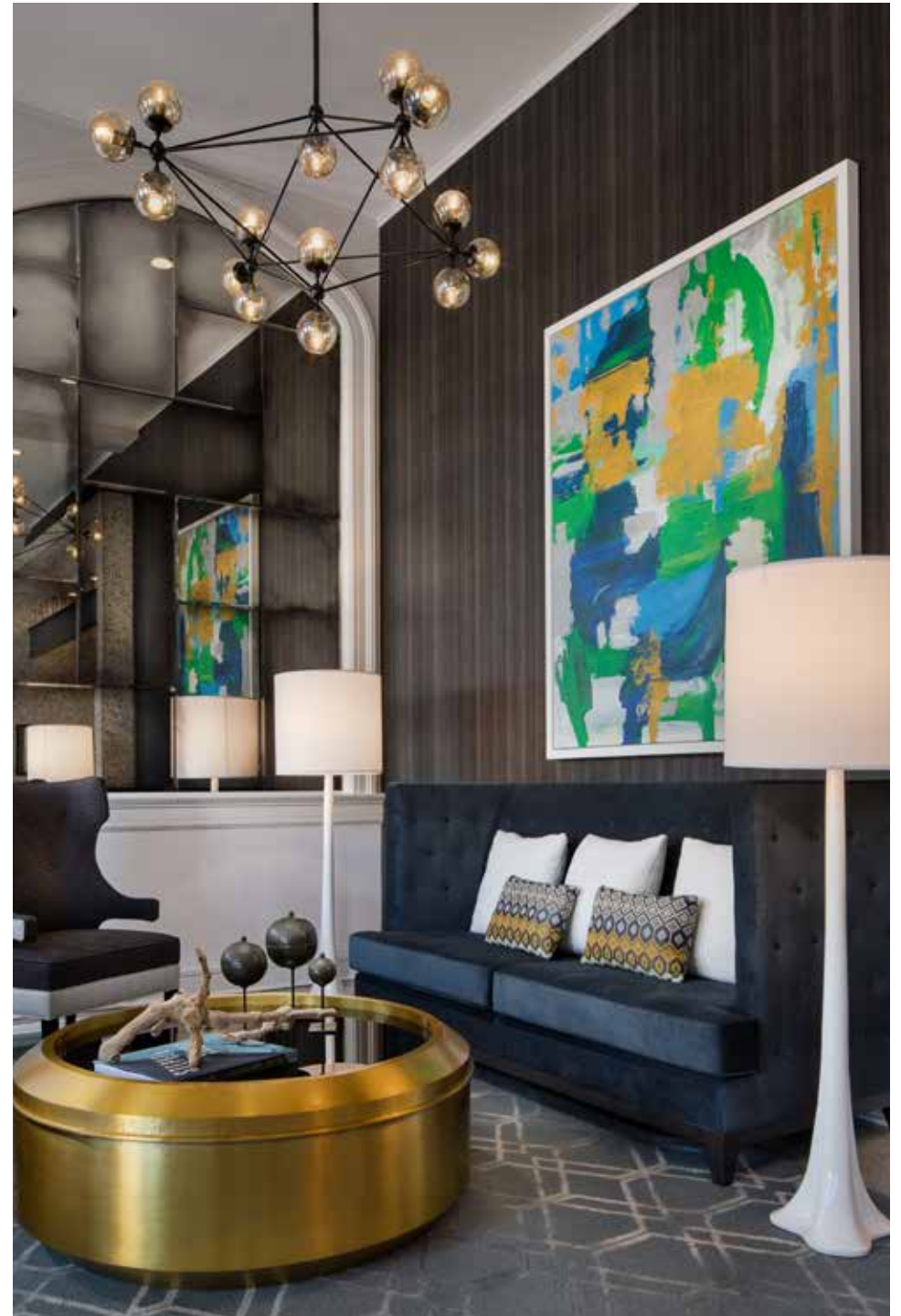
TEXTURAL











PARTRIDGE INN BY CURIO

AUGUSTA, GA



PARTRIDGE INN BY CURIO

The Partridge Inn started as a resort and retreat for Northern travelers from New York and New England to “winter” in the south. Established in 1882, it became known for its southern hospitality and friendliness. The hotel’s history is rich and over the years, this historic hotel has been a favorite place to visit by dignitaries and international celebrities as well as the people and tourists visiting Augusta. Our new “Southern with a Twist” design approach is an eclectic mix of furnishings that are inspired by world travel, have a warm and friendly, grounded, casual, yet sophisticated “club resort” style which utilizes warm, wood finishes, rich, deep, neutral colors, accented with whites, pops of color, burnished metals, leather, tailored classic patterns for rugs, fabrics, and bedding. The result is a custom tailored style that combines the best of old world glamor and charm with casual southern sophistication with a reassembled modern twist. Think of it as a modern version of the southern club resort. The guests coming to the new Partridge Inn will think of the hotel as the living room of the city. A popular place to meet and visit for drinks, dinners, to attend weddings, receptions, roof top events, and for the people of Augusta to welcome their guests to their city and the US Masters golf tournament.



SOUTHERN CHARM



RETREAT



GOLF



HISTORIC











HOSPITALITY







THE INN AT PATRICK SQUARE

CLEMSON, SC



THE INN AT PATRICK SQUARE

In the heart of Patrick Square, this new built hotel is the living room of the community. The Owners wanted to create an authentic, historic looking Inn with traditional, elegant interior spaces overlooking a lush green lawn. The property is a welcoming lodging spot for families, global business travelers, and regional visitors to Clemson's campus. The Inn is a gathering place that brings back special memories as well as a place to create new traditions. The ballroom and Prefunction spaces are beautiful settings for the finest wedding, reunion, or party catered by nearby famous chef Rick Irwin. The upcountry architectural backdrop features old world finishes, eclectic furniture and historical artwork and accessories that tell the stories of local legends and the founding fathers of Clemson. The guestrooms provide the most updated fixtures and amenities, a touch of modern with traditionally inspired finishes and furnishings. Comfortable lobby living spaces invite guests to converse while having breakfast, coffee, late afternoon tea, or cocktails.



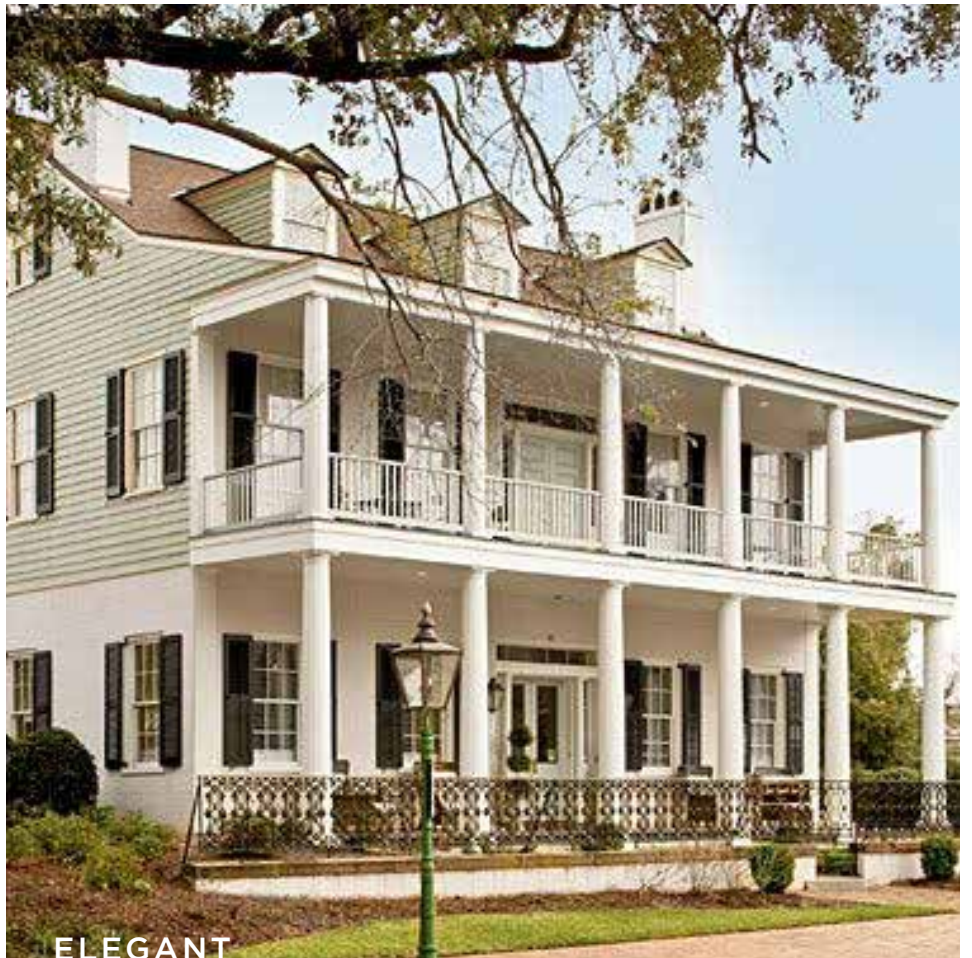
TRADITION



FAMILY



GATHERING PLACE



ELEGANT















GRAYLYN INTERNATIONAL CONFERENCE CENTER

WINSTON SALEM, NC



GRAYLYN HOTEL AND CONFERENCE CENTER

This boutique hotel and conference center at Wake Forest University included the renovation of The Mews, a 1920's stable and poultry house surrounding an open courtyard on the Graylyn Estate. The stone, French Normandy-style buildings provided our team a wealth of inspiration for the 36 guestrooms, presidential suite, vice presidential suite, and junior suites, concierge lounge, restaurant, fitness center and other areas. SPS reimagined the Mews as an elegant but informal guest house adjacent to the grand dame manor house. By integrating the farm buildings, poultry house, and gardens as a consistent, wrapped space, they created a self-sufficient property with concierge, gift shop, hospitality and dining room, adjacent to the conference center spaces. The new space planning allowed for development of more luxurious and spacious suites, a fitness center, and achieved an "entrance" to the hotel. All guest rooms were updated with luxurious bedding and academic level working spaces, yet eclectic furniture plans and nostalgic artwork and 3D accessories made each room feel like home.













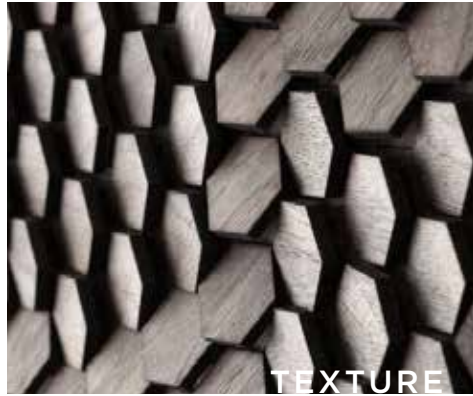
INTERCONTINENTAL

YORKVILLE, ONTARIO, CANADA

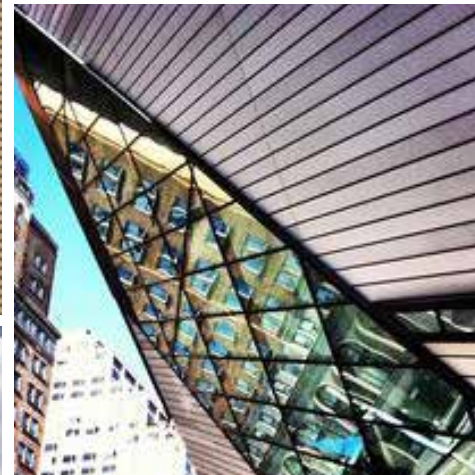


INTERCONTINENTAL

For the guest rooms and guest corridor of the Intercontinental Yorkville, the design direction was all about simplicity and luxury. We used natural materials and textures, and kept the color palette very neutral to appeal to a broad high end clientele in this upscale neighborhood of Yorkville. The corridors were dark and small, so we used light woods and whites to open the space up and bring in more light, making the space feel larger. The guest room design was highly focused on a luxurious guest bath and a beautiful and comfortable sleeping space.



TEXTURE



SIMPLICITY



LUXURY







Thank you!

Sims Patrick Studio is located at
267 West Wieuca Road NE, Suite 104
Atlanta, GA 30342
404 261 6043
simspatrickstudio.com

Sims Patrick Studio provides a rich and delightful interior design process out of our Atlanta studio, integrating our expertise in hospitality, retail, restaurant, corporate and high-end residential projects. Our extensive talents and capabilities allow us to listen, strategize, design and express concepts that lead to distinguished interiors, renovations and branded environments.

Shaping places into memories.