

Sims Patrick Studio

SHAPING PLACES INTO MEMORIES

OUR GOAL FOR EVERY EXPERIENCE WE CREATE:

MAKE IT MEMORABLE

MAKE IT CAPTIVATING

MAKE IT DELIGHTFUL

CORE LEADERSHIP

90+

Tripod leadership's
combined years of
industry experience



JENNY RUTLEDGE

Principal, VP of Design + Construction

Leading 3D design, construction
documentation and architect
collaboration



LIBBY PATRICK

CEO

Conceptual and narrative guru;
passion for the personal side of
interior design



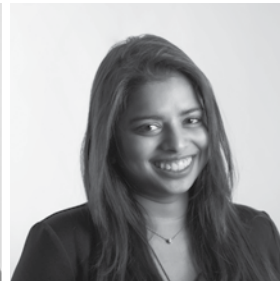
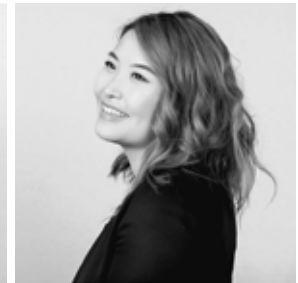
MELISSA WYLIE

Principal, VP of Design +
Operations

Oversees technical specifications
for furniture, furnishings and
artwork

TEAM

We are world-traveling, culturally curious, diversely talented designers, planners and project managers with a deep love of the arts—gathering inspiration everywhere we go.



Woman-owned and led global interior design studio based in Atlanta, Georgia

Founded in **1999**

25 active projects average

17 employees

85% Hotels

10% Multifamily

5% Other (restaurants, corporate, community)

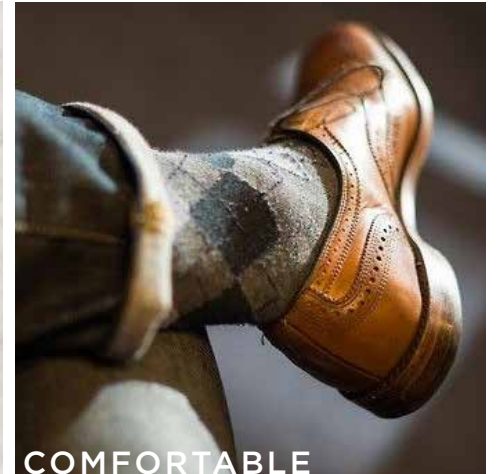
60+ hotel projects in last 7 years

HOSPITALITY PORTFOLIO

CROWNE PLAZA

AUGUSTA, GA





COMFORTABLE



NATURAL



WHIMSICAL



TRADITIONAL

CROWNE PLAZA

The new Crowne Plaza Hotel is located along North Augusta's riverfront as part of the long awaited Project Jackson, named for the Augusta businessman who originally designed the town at the turn of the 20th century. The hotel is a central meeting spot for locals and visitors alike for community events, baseball, and to soak up southern hospitality. The overall exterior architecture of the hotel is inspired by the famous Hampton Terrace Hotel completed in 1903. Before it tragically burned to the ground in 1916, the grand hotel was a resort for the rich and famous and had gained the reputation of being one of the most beautiful and handsomely appointed hotels in the South. Industrialists John D. Rockefeller and Harvey Firestone along with department store mogul Marshall Field and President William Taft came annually to "winter" in the South to enjoy golf, tennis, horseback riding, hunting, fishing, and simply the best that Southern Hospitality had to offer.

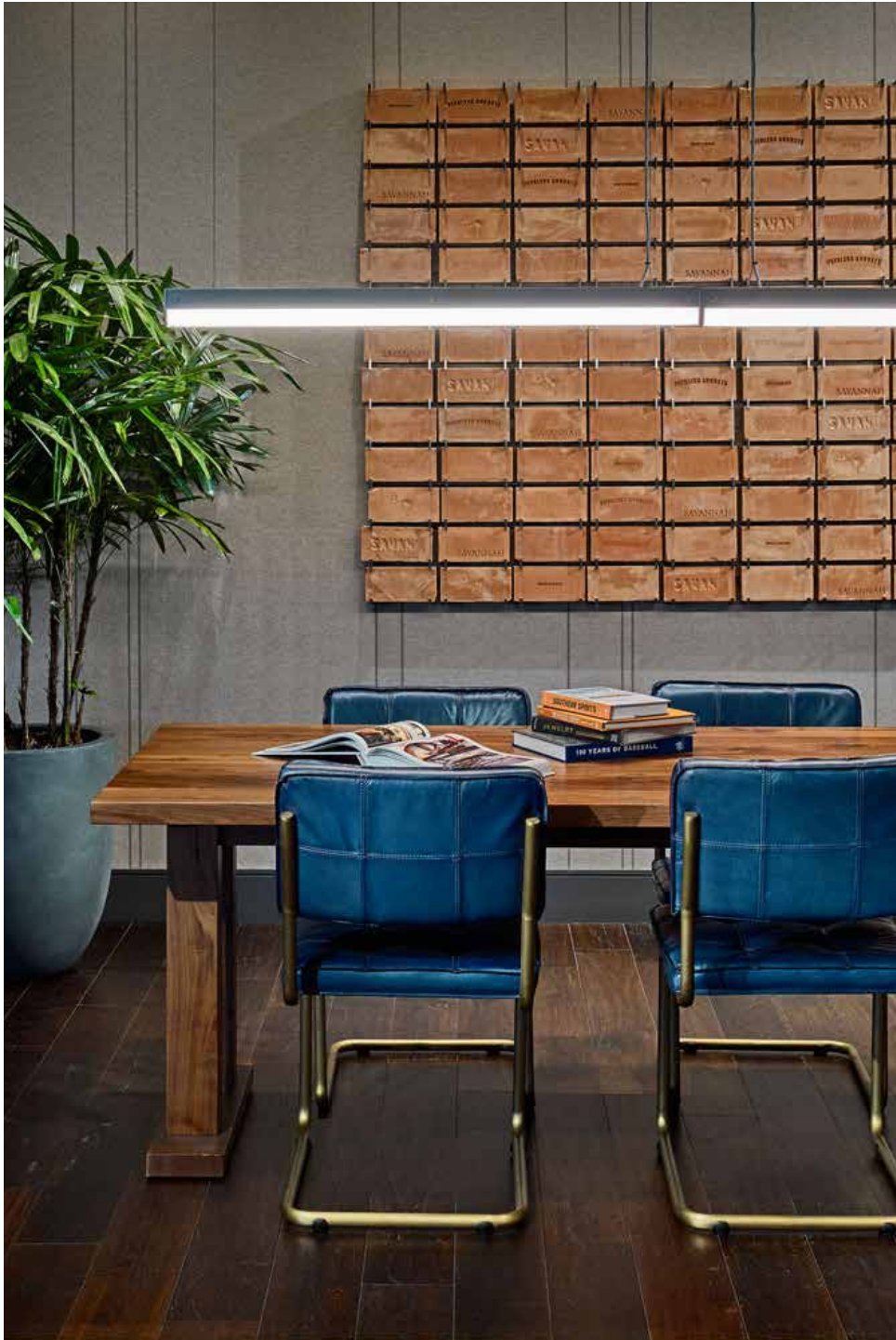
Fast forward 100 years later, our fresh interior design direction gives a nod to the glamour of the Golden Age of the Hampton Terrace and its status as a respite for the leisure sportsman, while embracing the modern South. Pulling inspiration from the nearby Sibley Mill, a confederate gunpowder plant that was modeled after the British Parliament, our interiors blend the sophistication of the southern heritage of leisure sporting with the modern edge of the industrial aesthetic. Our design provides a warm and inviting backdrop using familiar materials and finishes with contrast, textures, and good proportions used in simpler, more modern ways. We embrace the contrasts between old and new, formal and informal, to create a sense of place that is welcoming, refined, relaxed, whimsical, and inspiring. The hotel's restaurant may feature "up and coming" southern chefs but it will always have fried chicken and shrimp and grits.





















Sims Patrick Studio



SALT +
MARROW







ELBERT HOTEL

ELBERTON, GEORGIA

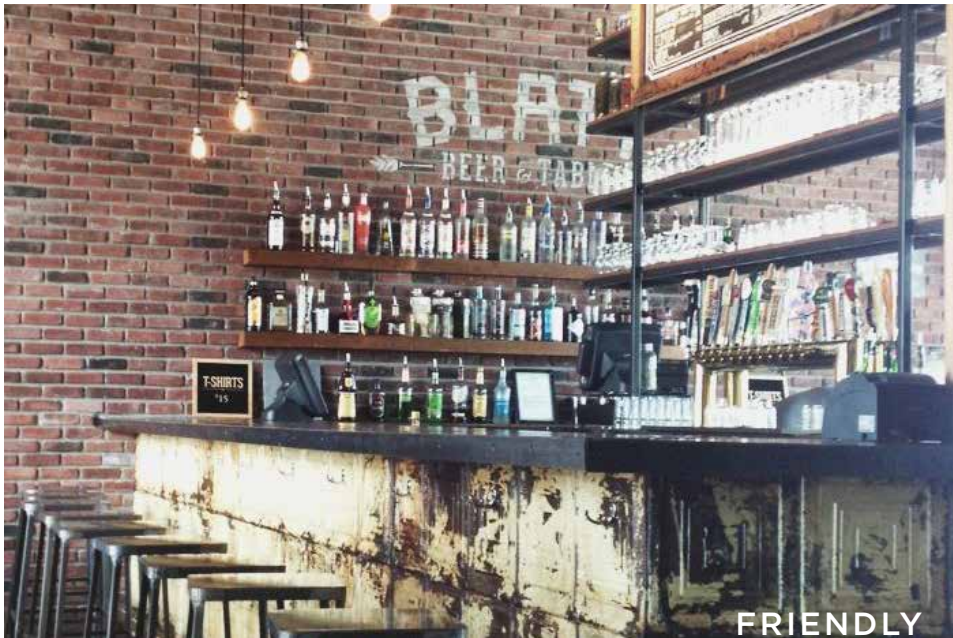




HISTORIC



LOCAL COMMUNITY



FRIENDLY



POLISHED



TEXTURAL

ELBERT HOTEL

Located in the heart of downtown Elbert Georgia, this 1925 Tudor Revival style building was purchased by the City of Elberton with hopes of developing a viable hotel and conference center to benefit the City. The property includes 27 newly created hotel rooms as well as a ground level restaurant space with banquet hall. The historic details of this hotel have been preserved including the original two-toned terrazzo floors and large stone fireplace. Located on the public square, you can walk to shops and restaurants and explore historic sites and monuments. With lovely views from almost every window, the property combines the original character of the property with the technology and convention of today. It is a luxurious getaway for meetings, events, retreats and family gatherings.











HOSPITALITY



BELLEVIEW INN

BELLEAIR, FL





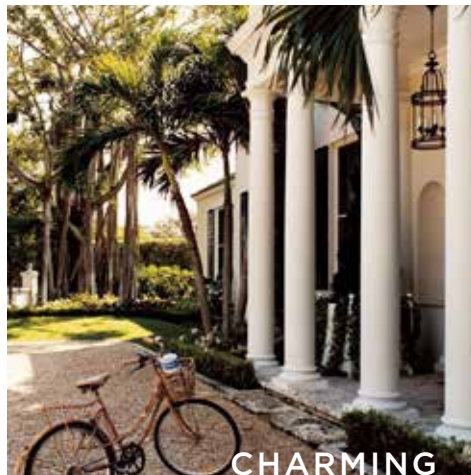
CLASSIC



GRAND



ECLECTIC



CHARMING



HISTORIC

BELLEVIEW INN

Formerly known as the Belleview Biltmore Resort, The Belleview Inn is located in the coastal town of Belleair, Florida. The original Queen Anne style property was built in 1897 by Henry Plant and was a luxury retreat for many famous people, dignitaries, and leaders. The building is noted for its signature architectural features; its vintage green roof, white wood sided exterior, hand-carved woodwork and Tiffany glass on the interior- all of which have been restored or repurposed for the renovation. The new 35-room Belleview Inn, which is also on the register of Historic Hotels of America, celebrates Gilded Age glamour with a touch of modern Southern charm. The revitalized portion of the resort retains the classic symmetrical layout of the grand mansion as well as the sweeping porch, the grand staircase, a reading room, library pub, restaurant, and a vintage-style ice cream parlor. Guestrooms and suites are spread out between the 2nd through 4th floors, and guests are greeted each morning with a basket of freshly baked pastries and the morning paper. The rich history, legacy, and hospitality of the 120+ year property have been woven throughout the hotel in both a literal and an abstract form, bringing this exquisite hotel back to its former glory.





















THE GRAND NATIONAL SPA

OPELIKA, AL





COMFORTABLE



COZY



NATURAL



INVITING



RELAXED

THE GRAND NATIONAL SPA

The Grand National is a three-level spa and fitness center in Opelika, AL providing guests and neighboring community a first-class wellness facility. This retreat borrows elements from the natural surroundings of the Alabama landscape and combines them with modern luxury.

Guests enter through the lobby and are greeted at a welcoming reception desk made from local Walnut tree. The lobby features a focal fireplace and tall windows surrounded by comfortable seating, hanging plants, swings, and smartly displayed products. The path to the locker rooms, lounge areas and showers has been well-planned for ease of circulation and privacy. Each treatment room invites individual guests to indulge their senses and relax their body and mind in a naturally calm setting. The quiet room is filled with candlelight, warm neutral colors, an inviting sauna and whirlpool experience and a twinkling southern sky ceiling. The hallway leading to the treatment rooms has dramatic vertical accent lights highlighting a textural stone wall and is punctuated with faux foliage giving the illusion of an outdoor space. The second floor has a salon with pedicure and manicure stations, hair styling services, a make-up artist station, and an array of beauty products on display. Upstairs, the fitness area provides the latest in equipment and a hydration bar. The light filled, open truss ceiling allows natural light in and the central multi-use exercise and movement room invites guests to join a yoga, dance, or body sculpting class. The facility was designed to provide a refresh to anyone's day; whether enjoying the spa, taking advantage of the salon or putting in some time at the gym, a visit to the Grand National Spa is sure to have guests leave with a reinvigorated pep in their step.

















THE GRAND HOTEL BY AUTOGRAPH

POINT CLEAR, ALABAMA

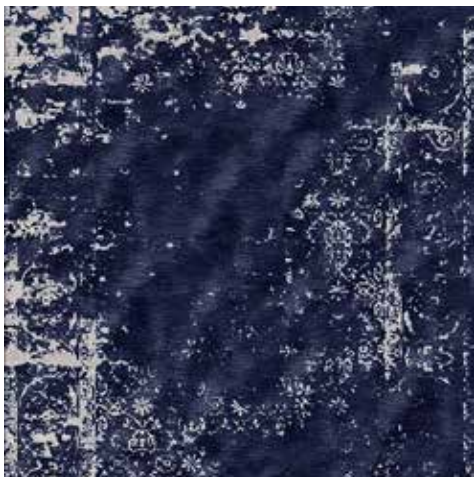




MAJESTIC



TIMELESS



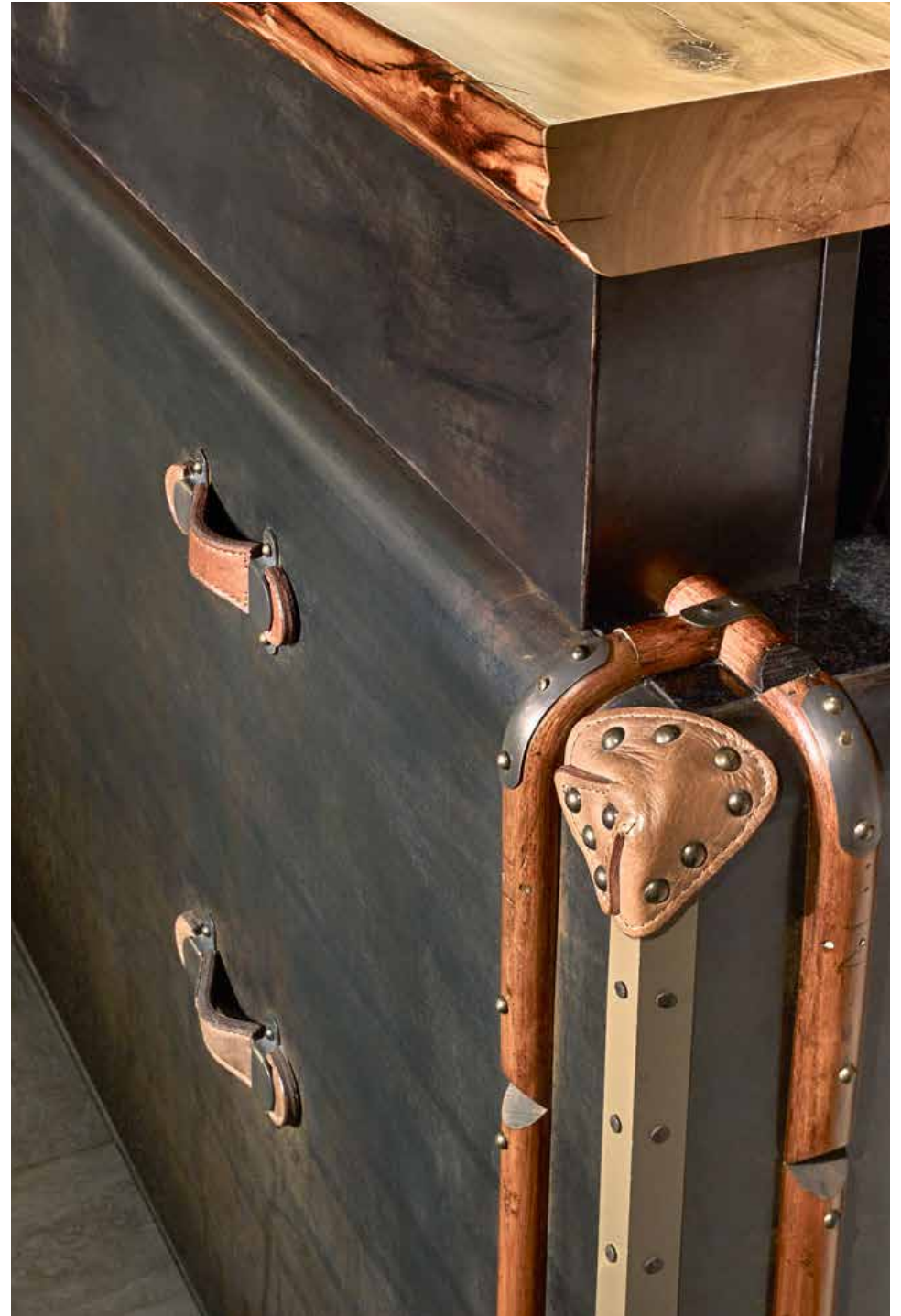
GRAND LIFE



THE GRAND HOTEL BY AUTOGRAPH

The interior design is an eclectic mix of Old World charm and modern southern hospitality. With the history behind The Grand, it was important to emphasize the great bones the hotel has and keep key aspects of what guests remember from their past stays in order to give the hotel a fresh new perspective. With the goal of making each guest feel like a pampered celebrity, the main landmark building of the Grand Hotel in Point Clear Alabama interior decor is updated to align the finest of Southern hospitality service and tradition with a new design that nods to the past yet provides a fresh new decor and the latest food concepts and understated luxurious amenities. Through the use of signature focal features and artwork, the property is full of delightful surprises. Whether the guest is attending a conference, a wedding, to play golf, a family vacation or is a local resident, the new design celebrates the magic of this understated yet elegant place located overlooking the Mobile Bay amongst the majestic live Oak trees and beautiful landscaping.









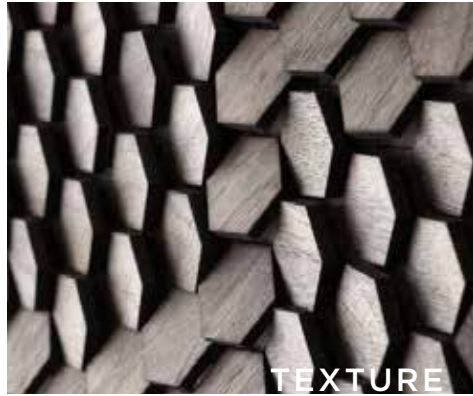




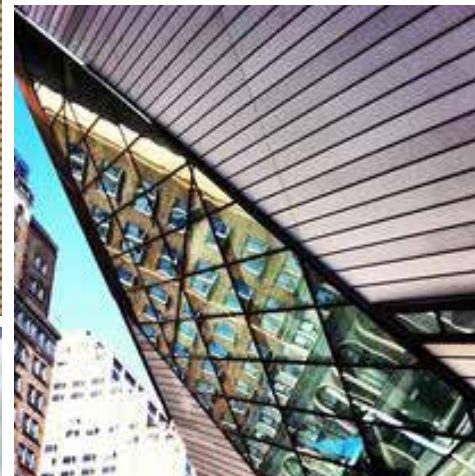
INTERCONTINENTAL (IN PROGRESS)

YORKVILLE, ONTARIO, CANADA





TEXTURE



SIMPLICITY



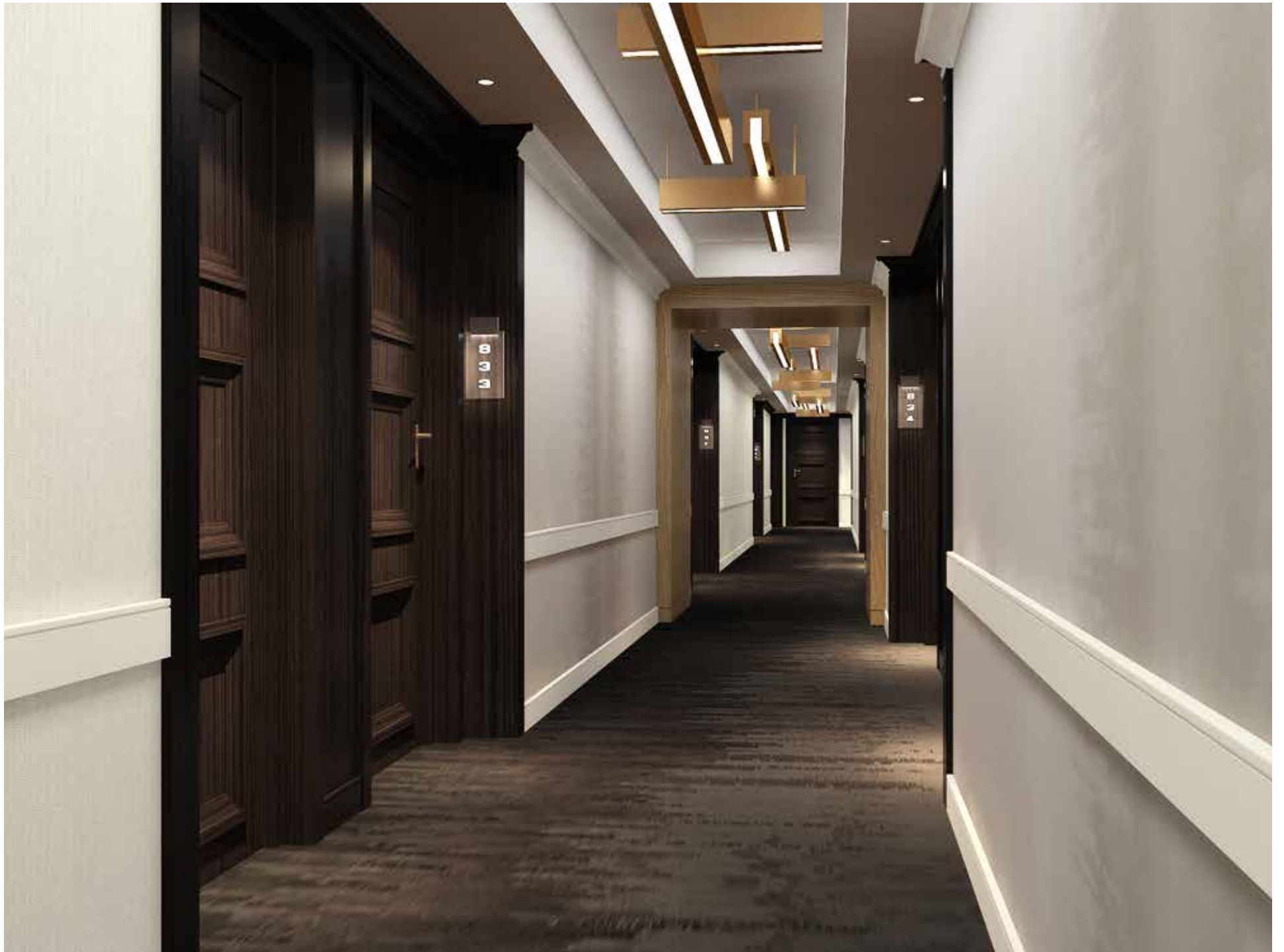
LUXURY

INTERCONTINENTAL

For the guest rooms and guest corridor of the Intercontinental Yorkville, the design direction was all about simplicity and luxury. We used natural materials and textures, and kept the color palette very neutral to appeal to a broad high end clientele in this upscale neighborhood of Yorkville. The corridors were dark and small, so we used light woods and whites to open the space up and bring in more light, making the space feel larger. The guest room design was highly focused on a luxurious guest bath and a beautiful and comfortable sleeping space.









LOUISVILLE BOUTIQUE HOTEL (IN PROGRESS)

LOUISVILLE, KY

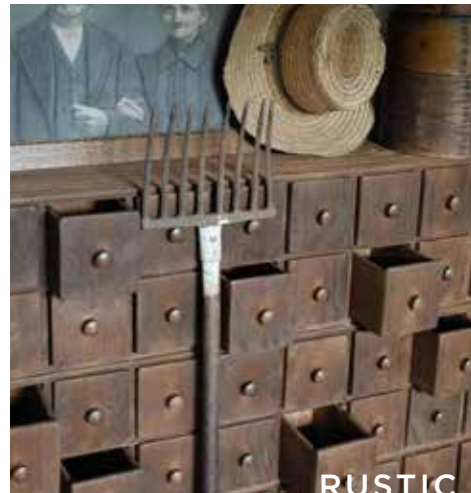




SOUTHERN CHARM



HISTORIC



RUSTIC

LOUISVILLE BOUTIQUE HOTEL

Nestled in the heart of the downtown Market District, this historic boutique hotel in Louisville, Kentucky will be a charming destination inspired by its past life as a pharmacy as well as the city's horse country heritage and traditions. A mix of old and new, this unique hotel will engage the aspiring millennial guest, the established corporate executive, as well as the weekend get-away couple. The rustic elegant décor will be the backdrop for social gatherings and community events. We envision the lobby to be a warm, friendly and an interactive space that provokes conversations and provides a variety of intimate places to eat and drink. We will create bold fresh contrasts to the overall neutral palette while having a balance of masculine and feminine appeal. This rustic but refined modern look will be a combination of rough textured materials, found objects and specialty finishes. These features will be emphasized with dramatic lighting that changes from day to night. We envision this property to be a holistic turn key renovation with a complete new branding identity. Every aspect of the hotel will enhance the unique brand experience. Curated artwork and accessories, choreographed music, food and specialty drink offerings and architectural details will be the common thread through-out the three dimensional experience. Imagine walking into an old world envelope filled with paradox's of old and new, rough and shiny, soft and streamlined where Industrial rustic elegance meets modern southern charm. This property will be the place of choice for locals to bring their friends and visitors to be immersed in Louisville's rich culture.





HILTON BONNET CREEK (IN PROGRESS)

ORLANDO, FL





ELEGANCE



DISCOVERY



ESCAPE

HILTON BONNET CREEK

Serene Wilderness Meets Refined Elegance

In a city inundated with the hustle and bustle of theme parks, the Bonnet Creek Hilton is a modern, casual, friendly yet sophisticated “Escape”. The hotel arrival sets the tone of the Architecture with the attention to modern classic details and beautifully landscaped gardens. The entry lobby is an interactive environment where industry changing ventures are born and families are celebrated. Multiple intimate, cozy areas are combined with open group seating and they cumulatively provide a welcoming hang out for the business, family or leisure traveler. The hotel, located in the heart of a vast wetland preserve, has views of towering Pines, stately Cypress trees and subtropical landscape. The guests can explore and discover the edge of untouched neighboring wetlands, native vegetation, elegant birds and exotic wildlife. From the guest rooms, one has amazing views of the nightly fireworks, the Disney parks, the championship golf course, lagoon style pool and lush gardens. The comfortable, elegant, and carefully crafted rooms are a welcomed retreat for work and for un-winding from the day. They provoke a positive emotional experience that is delightful and has an element of surprise!







HOTEL HARTNESS (IN PROGRESS)

GREENVILLE, SC





CURATED



REFINED



TIMELESS



COMFORTABLE



NATURE INSPIRED

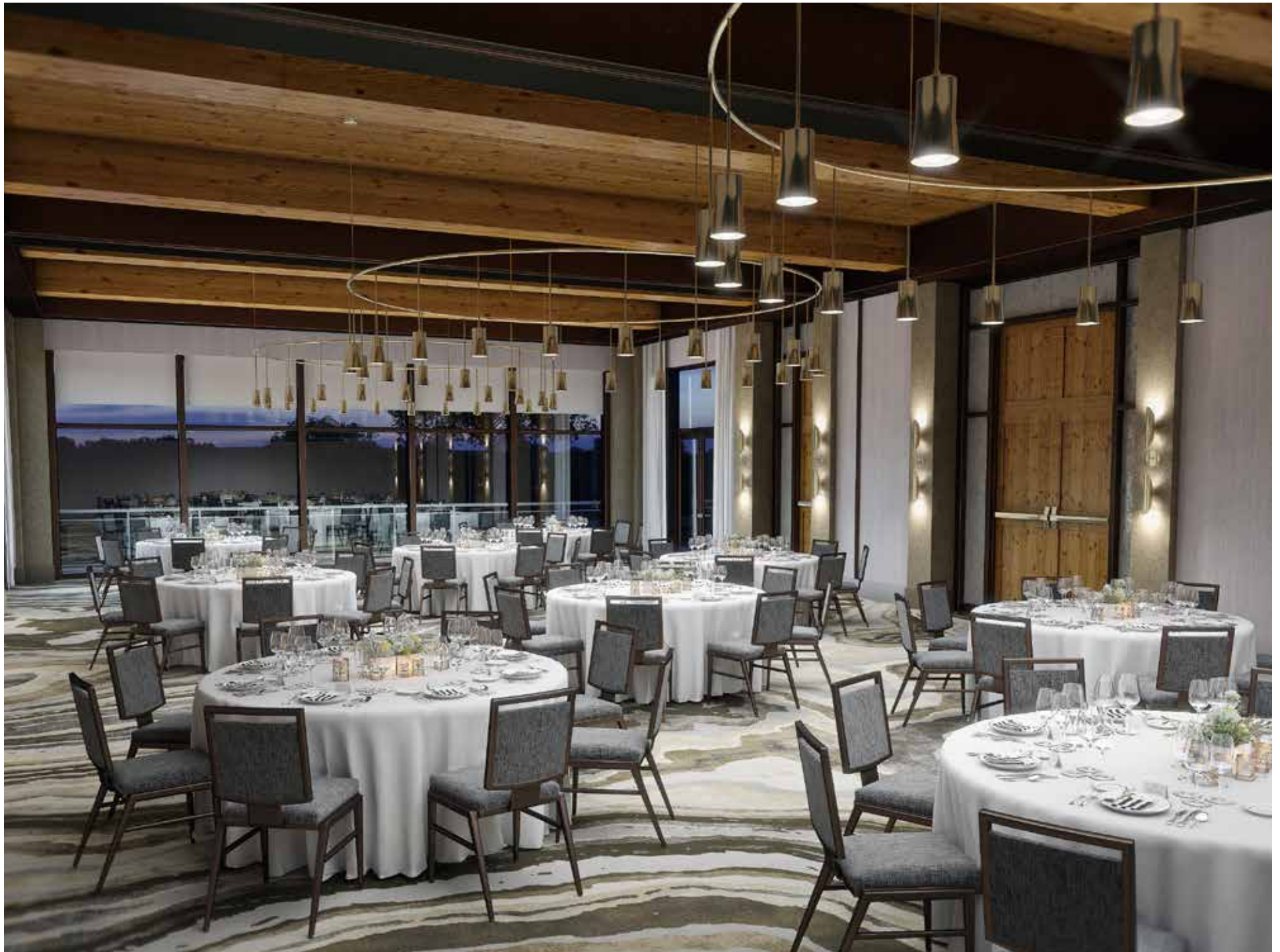
HOTEL HARTNESS

Hotel Hartness sits on 400 acres of rolling meadows, lakes, trails, and pecan groves. The site will feature the mid-century French manor house of the Hartness family as the front door of the Hotel. The beautiful winding arrival will set the stage for the unique guest experience. Imagine being welcomed with a signature cocktail or iced tea, cheese biscuits and toasted pecans. Enjoy your breakfast in an intimate dining room or overlooking the landscaped courtyard from the outdoor patio. Lounge by the fireplace in the living room surrounded with local interest books and memorabilia. Disconnect from the day to day and reconnect with yourself by exploring the surrounding trails, lakes, and groves. Finish the day with a delectable meal and a handcrafted cocktail at the lobby bar. An area rich in ambiance and steeped in character. Delight your senses with a curated backdrop of classic South Carolina architecture in the guest rooms and living spaces. The surrounding natural elements are characterized within the spaces through native floral scents, layers of texture and pattern, and comfortable furnishings, finishes and materials.

The underlying Southern hospitality of the Hartness family blends with the area's rich past and has a surprisingly modern spirit. The decor is eclectic, comfortable and timeless with a touch of unexpected whimsy. The holistic experience and service at Hotel Hartness will be engaging and delightful! It is the place for international guests and the local community to come together to create memories that will last a lifetime.









Thank you!

Sims Patrick Studio is located at
267 West Wieuca Road NE, Suite 104
Atlanta, GA 30342
Reach us at 404 261 6043
simspatrickstudio.com

Sims Patrick Studio provides a rich and delightful interior design process out of our Atlanta studio, integrating our expertise in hospitality, retail, restaurant, corporate and high-end residential projects. Our extensive talents and capabilities allow us to listen, strategize, design and express concepts that lead to distinguished interiors, renovations and branded environments.

Shaping places into memories.